

RFOT

WIRELESS MEAT TEMPERATURE LOGGER



MadgeTech's RFOT is the most advanced wireless temperature data logger in the meat industry today. The RFOT's rugged design, equipped with a flexible piercing probe allows it to be used in the harshest environments. It is perfectly suited for smoke houses, ovens and other cooking processes up to 212°F (100°C) as well as refrigerators and freezers down to -4°F (-20°C). It is completely splash proof and can withstand wash down cycles. This state-of-the-art device records and transmits internal product temperature readings back to a central computer for instant real-time monitoring.

The RFOT never needs to be connected to a computer as it has been designed for two way wireless communication. Full communication can be performed directly from a central PC. In addition to wirelessly transmitting data, the

RFOT also stores each reading to internal memory for backup. This back up data may be retrieved wirelessly at a later time.

MadgeTech's easy to use software features user programmable critical control points, called "cooling flags" to assist in compliance with USDA Appendix B. The "cooling flags" are automatically annotated on the graph and tabular data views. The summary tab provides the cool down duration between each critical control point. The data can also be automatically exported to Excel® for further calculations.

As the leader in low power data logger technology, MadgeTech continuously improves its products and develops solutions to meet ever-changing challenges. The RFOT was designed with our customers in mind. MadgeTech offers free firmware upgrades for the life of the product so that data loggers already deployed in the field can grow with new technological developments. Units do not need to be returned to the factory for upgrades. The user can do this automatically from any PC.

Features

- Wireless 2 Way Communication
- Splashproof (IP67)
- Real-time Operation
- 2 Year Battery Life
- Battery Life Indicator
- Programmable Start Time
- Memory Wrap Around
- N.I.S.T. Traceable
- Field Upgradeable

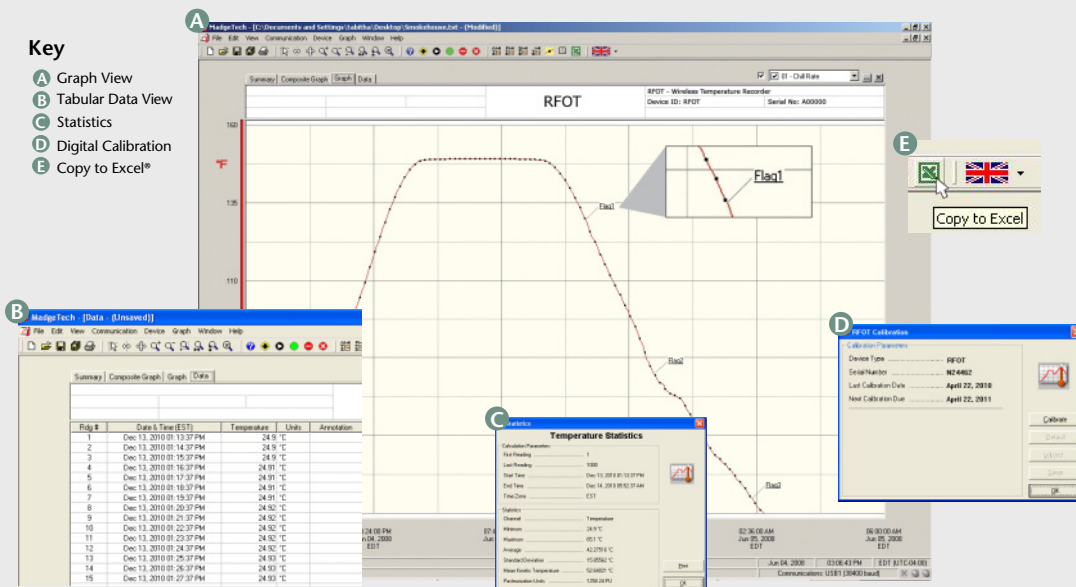
Benefits

- No Wiring
- Fast Installation
- Minimal Long-Term Maintenance
- Long-Term Field Deployment

Applications

- Meat Processing
- Meat Storage
- Smoke Houses
- HACCP Compliance
- Complying with USDA Regulations
- Food Process Monitoring

MADGETECH DATA LOGGER SOFTWARE



- ### Software Features:
- Multiple graph overlay
 - Statistics
 - Digital calibration
 - Zoom in/ zoom out
 - Lethality equations (F₀, PU)
 - Mean Kinetic Temperature
 - Full time zone support
 - Data annotation
 - Min./Max./Average lines
 - Data table view
 - Automatic report generation
 - Summary view
 - Multilingual

RFOT SPECIFICATIONS*

Temperature**

Probe Temperature Range: -50°C to +200°C (-58°F to +392°F)

Resolution: 0.01°C

Probe Calibrated Accuracy: ±0.1°C (14°F to 302°F/-10°C to +150°C)
±0.5°C (outside of that range)

Resistance

Nominal Range: 0 to 500Ω

Resolution: 0.001Ω

Calibrated Accuracy: ±0.015Ω

Specified Accuracy Range: 0 to 500Ω at 25°C

Wireless

RF Frequency: 2.45GHz IEEE 802.15.4 ultra-low power MadgeNET wireless transceiver with fully bi-directional communication

Band: ISM band 2.405-2.48 GHz

Maximum Output Power: +0dBm typical

Receiver Sensitivity (RFC1000): -95dBm typical

Range: Line-of-sight 400', indoors 150'

*SPECIFICATIONS ARE SUBJECT TO CHANGE WITHOUT NOTICE. SPECIFIC WARRANTY REMEDY LIMITATIONS APPLY. CALL 1-603-456-2011 OR GO TO WWW.MADGETECH.COM FOR DETAILS.

**Temperature specifications based on ideal 100 Ω Pt RTD compliant with IEC 751 (1983) and ITS -90, 5000Ω.

BATTERY WARNING: WARNING: Do not recharge, disassemble, heat above 125 °C (257 °F), incinerate or expose contents to water. Vent, rupture or explosion may result and cause severe burns.

General

Reading Rate: One reading every two seconds to one every 24 hours

Memory: 20,000 readings;
software configurable memory wrap

Wrap Around: Yes

Start Modes: • Immediate start

Calibration: Digital calibration through software

Calibration Date: Automatically recorded within device

Battery Type: 3.6V lithium battery included; **user replaceable**

Battery Life: 2 years typical

Data Format: Date and time stamped °C, °F, K, °R

Time Accuracy: ±1 minute / month (at 25°C)

Computer Interface: USB (interface cable required); 115,200 baud

Software: XP SP3/Vista/Windows 7

Operating Environment: -20°C to +100°C (-4°F to 212°F),
0%RH to 100%RH non-condensing

Dimensions: Body: 8" x 1.75" dia. (203mm x 44mm dia.)
Hook ID: 0.5" (13mm)
Probe: 4" x transitional dia. from 0.13" to 0.11"
(101mm x 3mm to 2.8mm dia)
Cable Length: 30" (762mm)

Weight: 8.8oz (250g)

Material: Body: Tecaform®, food grade
Cable Jacket: Polyurethane

Approvals: CE, US (FCC), CA (IC)

ORDERING INFORMATION

MODEL	DESCRIPTION	PRICE (U.S.)
RFOT	Temperature Data Logger	\$499.00
RFC1000	Wireless RF Receiver for use with MadgeNET. USB to mini USB adapter included to connect to PC.	\$149.00
RFC1000-REPEATER	Wireless RF Receiver for use with MadgeNET. USB to mini USB adapter and power supply included.	\$149.00
N.I.S.T.	N.I.S.T. Calibration Certificate	\$60.00
TLH-5903	Replacement battery for RFOT	\$15.00

For Quantity Discounts call 603-456-2011 or email sales@madgetech.com

*To order the product with the N.I.S.T. certificate add -CERT to the end of the part number and add \$60.00 to the price.

ASK ABOUT
OUR OTHER
DATA
LOGGERS

Temperature
Humidity
Pressure
pH
Level
Shock
LCD Display
Pulse/Event/State
Current
Voltage
Wireless
Intrinsically Safe
Spectral Vibration
Motion